

# D-Ended Sight Glass Fittings PN 2,5

# Type KL 633

**Pressure rating:**

2,5 bar  
higher pressures on request

**Base frame:**

1.4404 / 1.4571 / 1.4435 / 1.4462 / ST37 / H2  
on demand with APZ DIN EN 10204-3.1  
Flange thickness: 25mm

**Top frame:**

1.4301 / 1.4404 / ST37 / H2  
Flange thickness: 15mm

**Bolts:**

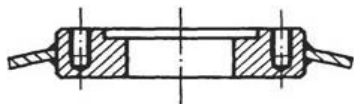
DIN 912 A2-70 or A4-70

**Sight glass:**

Soda-lime-silicate glass DIN 8903 (up to 100°C)  
Borosilicate glass DIN 7081 (up to 243°C)

**Seals (FDA compliant):**

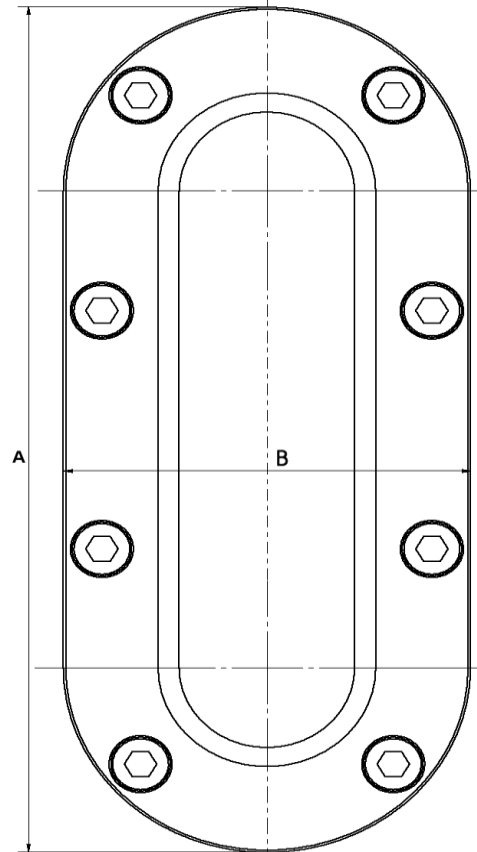
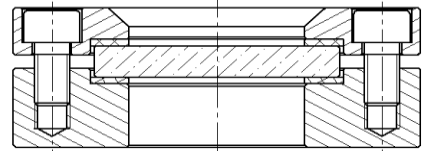
EPDM, Reinz AFM 34, PTFE  
others on request



Version with blind tappings



or with cylindrical pad shape



**Ordering excmple:**

5 D-Ended Sight Glass Fittings type KL 633 Size 5 with radius R = 307mm  
Base frame: 1.4404  
Top frame: 1.4301  
Borosilicate glass, Gaskets: EPDM

Size	Mounting Size (mm)		View (mm)		No. Of M10 Bolts	Glass Dimensions
	A	B	height	width		
1	266	116	200	50	8	70/10 x 220
2	341	116	275	50	10	70/10 x 295
3	416	116	350	50	12	70/10 x 370
4	491	116	425	50	14	70/10 x 445
5	566	116	500	50	16	70/10 x 520
6	641	116	575	50	18	70/10 x 595
8	791	116	725	50	22	70/10 x 745

**Remark:**

Please check the seal area of the base flange after welding; adjust it if uneven.



AVEMAR CZECH s.r.o. | speciální armatury pro měření a regulaci |  
Branch office | Podvihovská 378/12C | 747 70 Opava 9 - Komárov | Česká republika |  
Tel.: +420 553 764 015 | Fax: +420 553 654 820 | www.avemar.cz | avemar@avemar.cz |